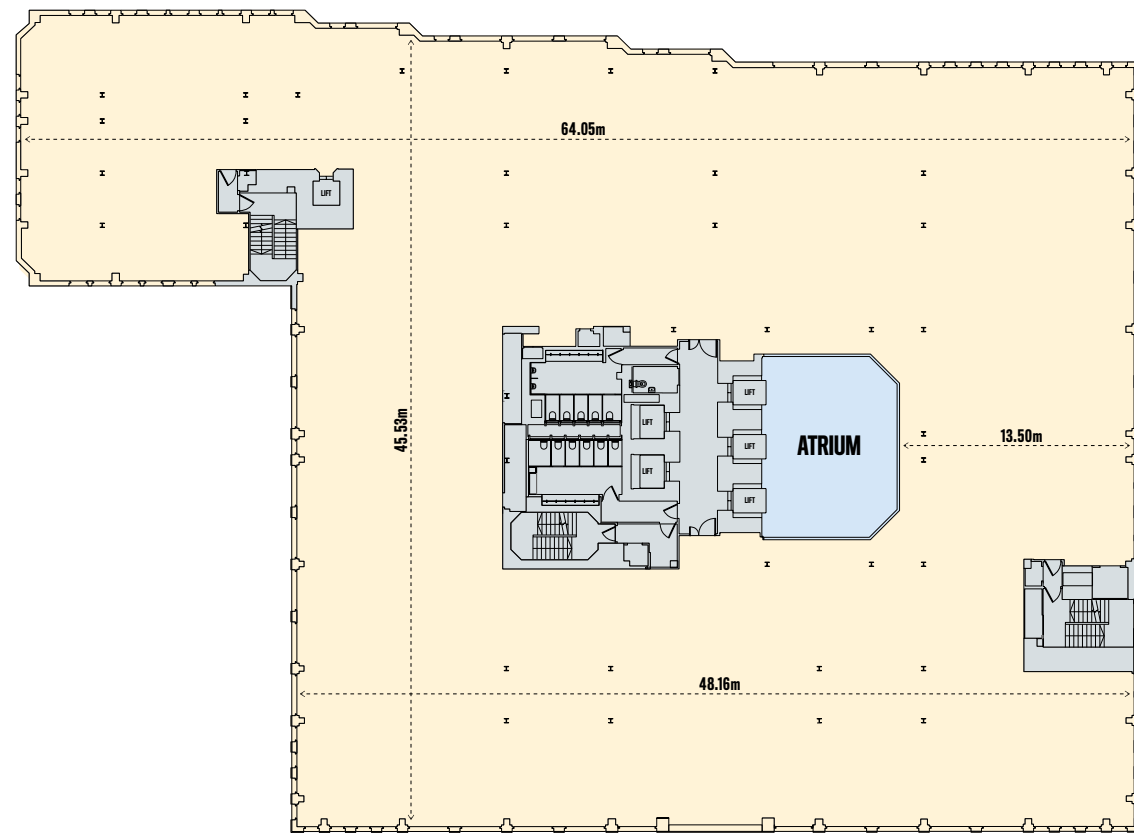
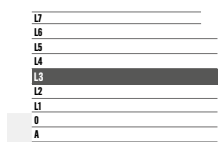


FLOOR PLANS

LEVEL 3 21,851 SQ FT

KEY

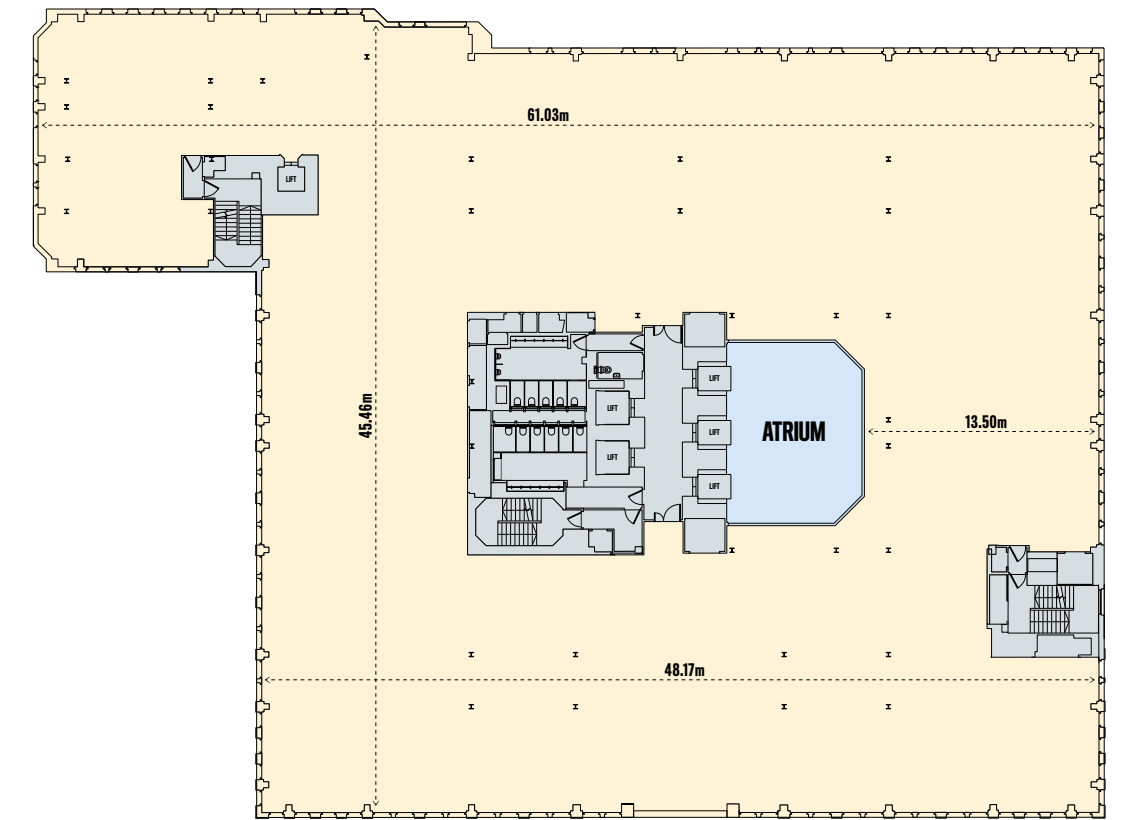
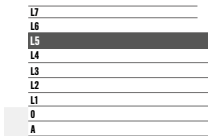
- Office
- Core and WCs
- Atrium



LEVEL 5 20,914 SQ FT

KEY

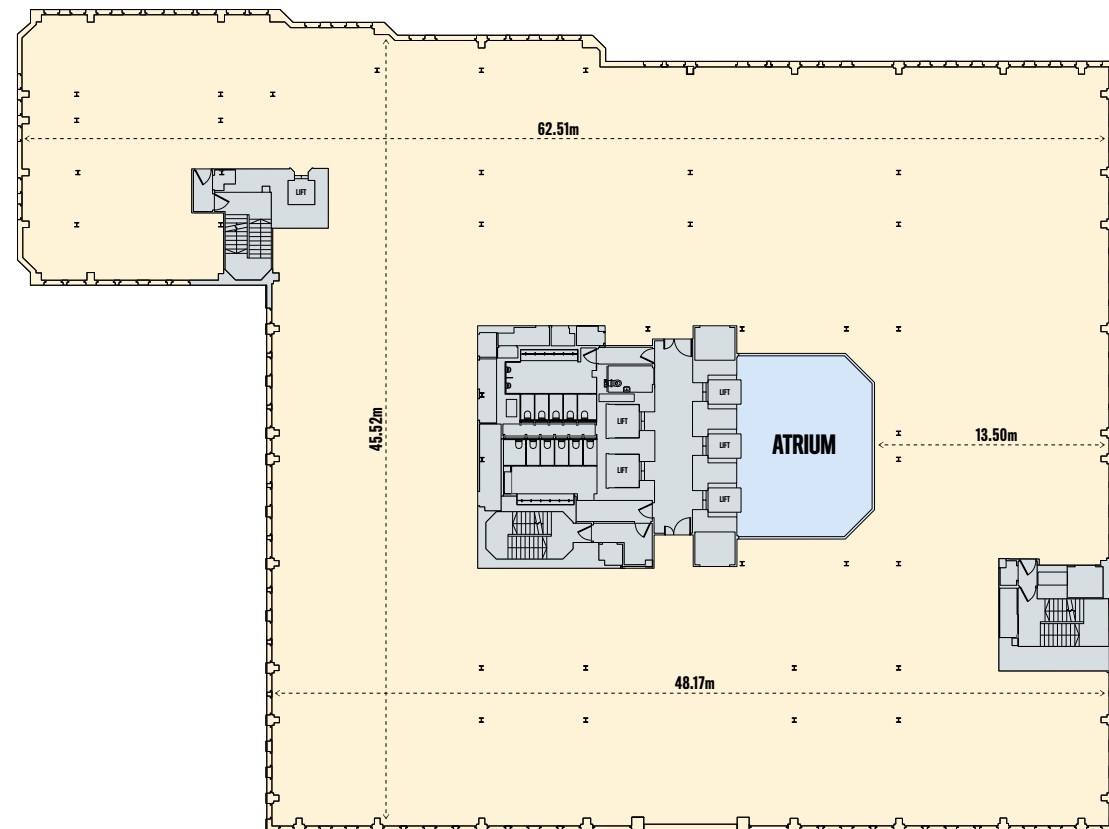
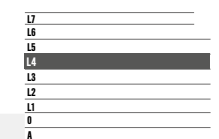
- Office
- Core and WCs
- Atrium



LEVEL 4 21,399 SQ FT

KEY

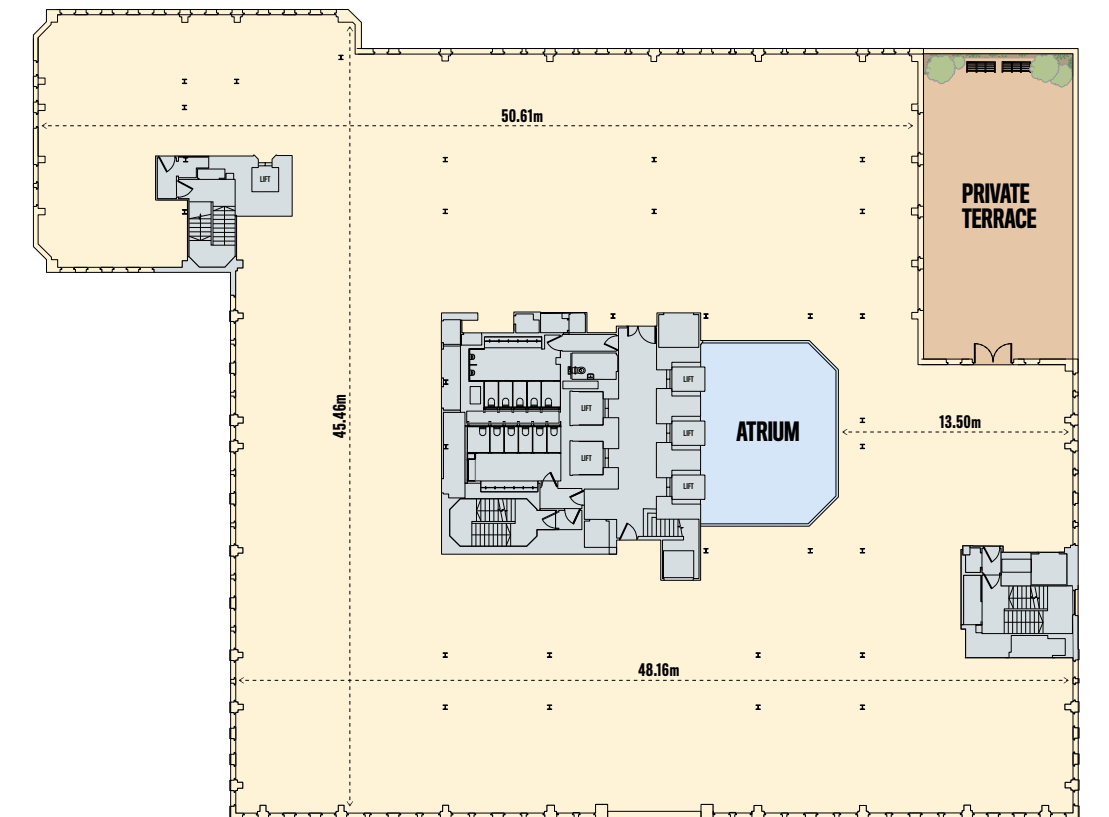
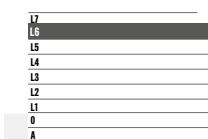
- Office
- Core and WCs
- Atrium



LEVEL 6 18,848 SQ FT

KEY

- Office
- Private Terrace (1,615 sq ft)
- Core and WCs
- Atrium



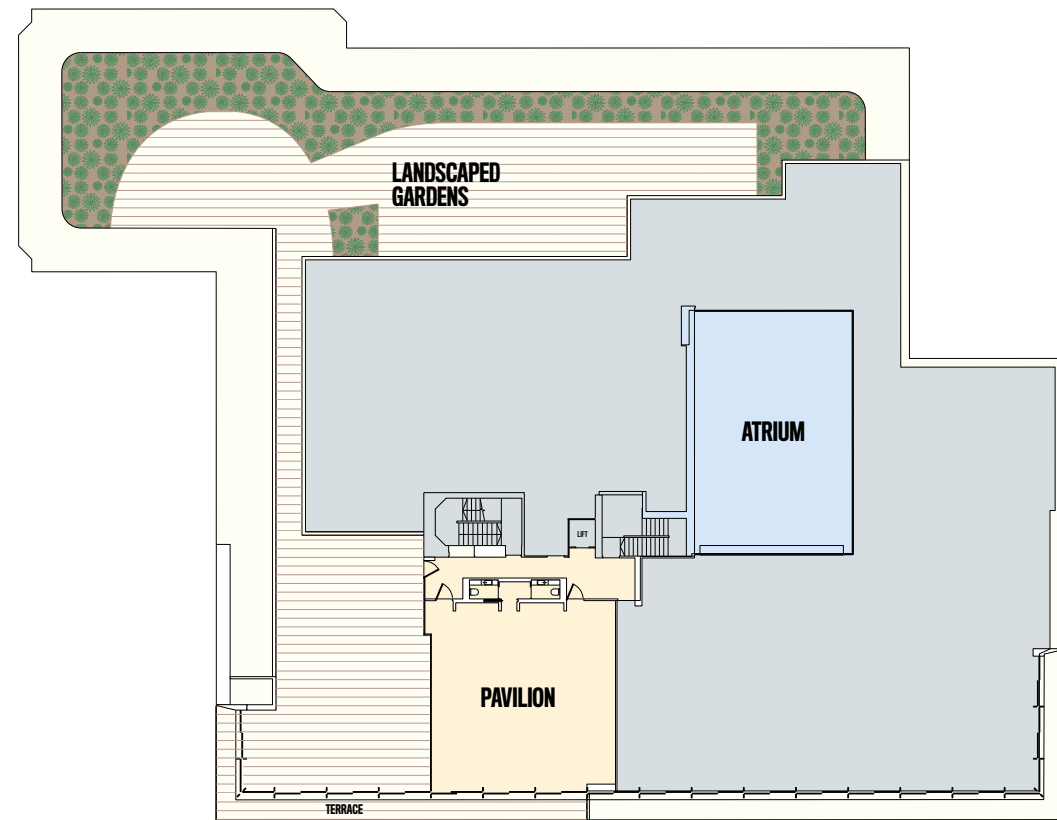
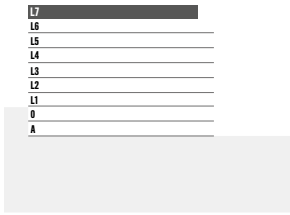
Floor plans are for indicative purposes only and not to scale.

FLOOR PLANS

LEVEL 7

KEY

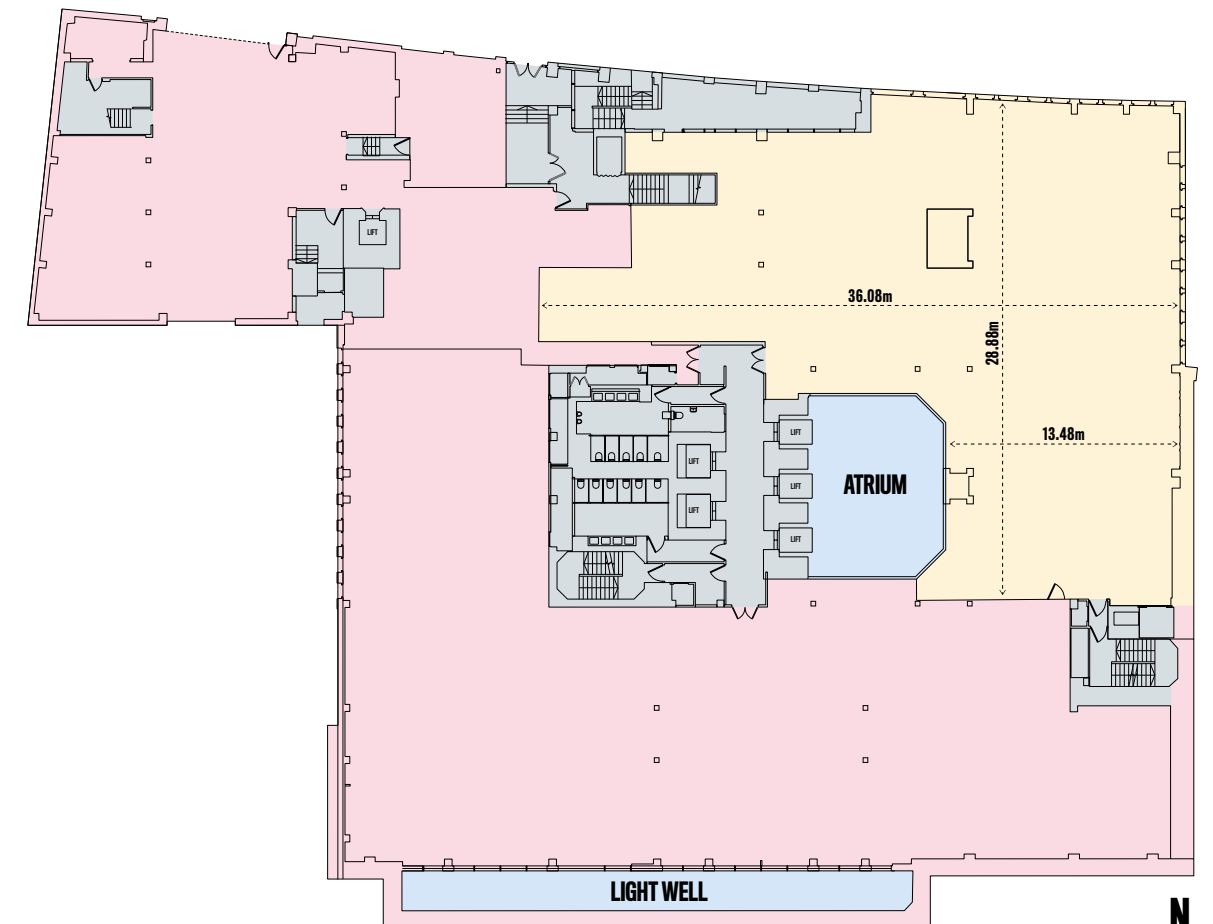
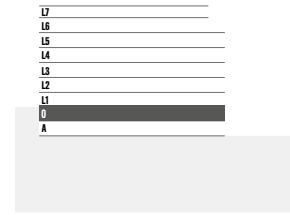
- Pavilion (1,067 sq ft)
- Landscaped Gardens (5,700 sq ft)
- Core
- Plants
- Atrium



LEVEL 0 7,029 SQ FT

KEY

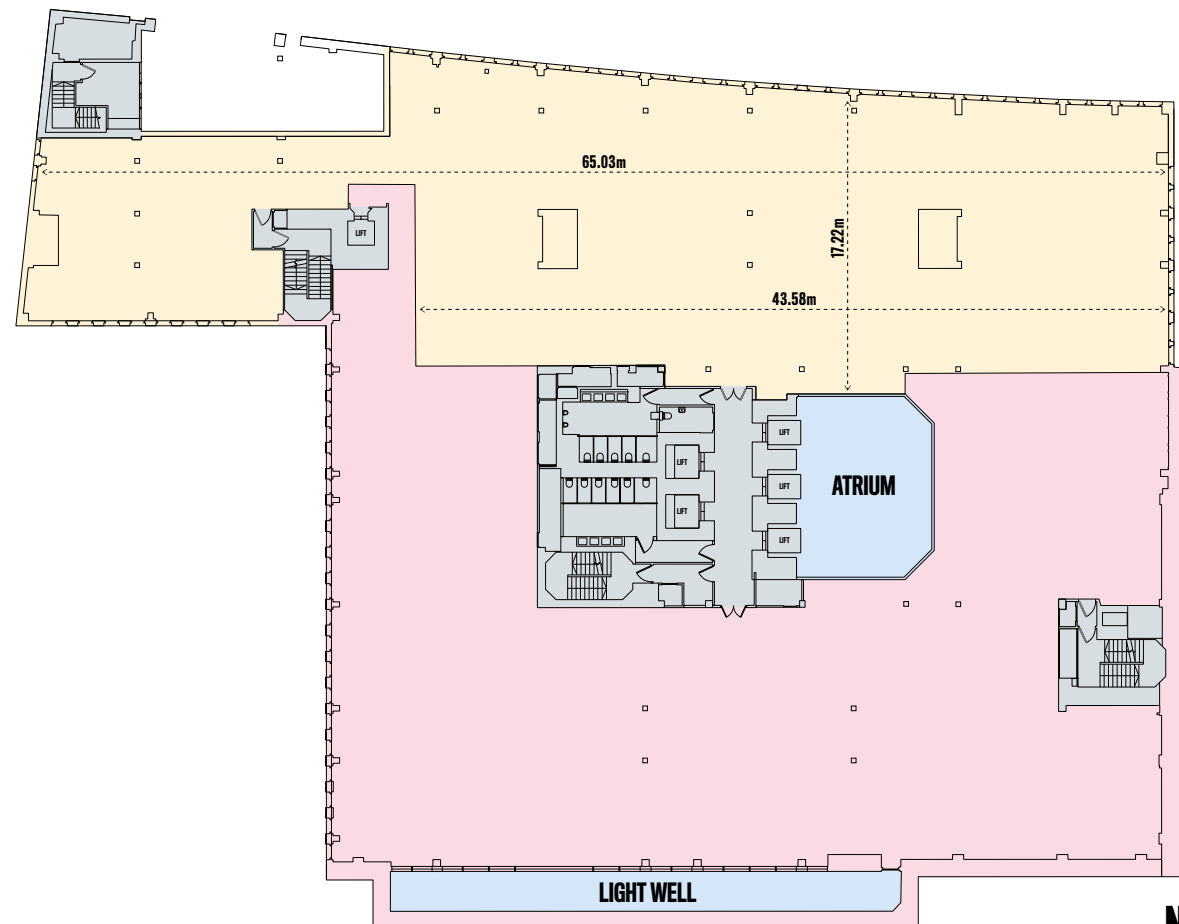
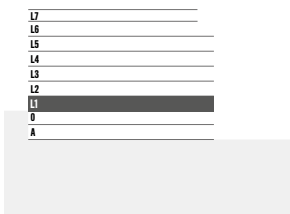
- Office
- Office (Occupied)
- Core and WCs
- Atrium / Light Well



LEVEL 1 9,408 SQ FT

KEY

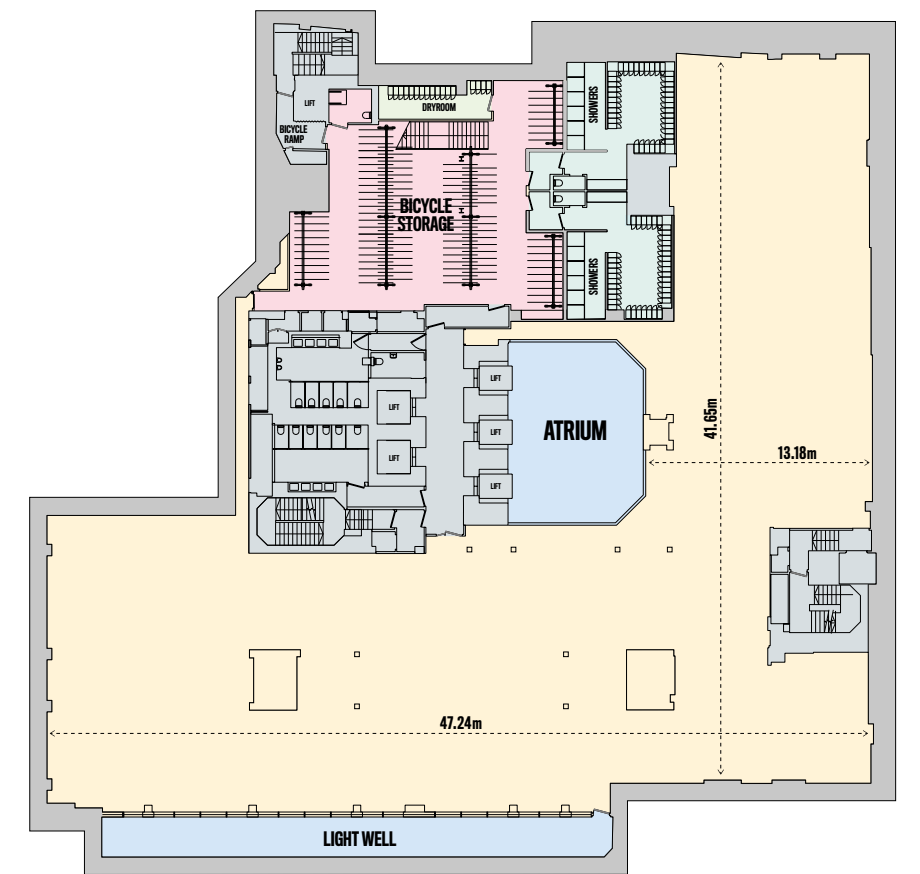
- Office
- Office (Occupied)
- Core and WCs
- Atrium / Light Well



LEVEL A 11,776 SQ FT

KEY

- Office
- Showers (13 spaces)
- Bicycle storage (208 spaces)
- Dryroom
- Core and WCs
- Atrium / Light Well



Floor plans are for indicative purposes only and not to scale.